

Dimensions: 120 x 85mm

PERROPAL 



Nail Groomer  
Instruction Manual

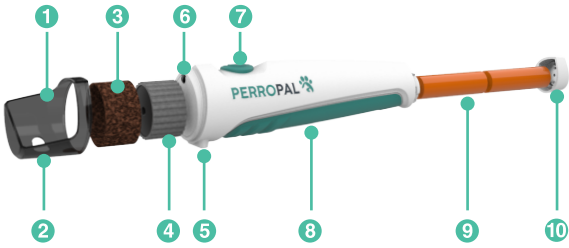
Thank you for purchasing the PerroPal Nail Groomer!

PerroPal's Nail Groomer is the perfect device to save you time, money, and stress! This nail grinder is durable and long-lasting, and its one-button functionality makes it a breeze to use, even if you have never trimmed your pet's nails and claws before! The PerroPal Nail Groomer gently files down your pet's nails and claws. Regular use prevents overgrowth, toenail splitting, ingrown nails, and irritated paws, all of which affect walking comfort.



What's included

- PerroPal Nail Groomer (batteries not included)
- 4 replacement sanding drums



- 1 Grinder Guard
- 2 Medium Hole Detailer
- 3 2 Coarse + 2 Fine Sanding Drums
- 4 Spinning Mandrel
- 5 Anti-roll Foot
- 6 LED Detailing Light
- 7 Power Button (2 Speeds)
- 8 Co-molded Silicone Grip + Ribs
- 9 Requires 2 x AA Batteries (not included)
- 10 Twist Lock Battery Cap

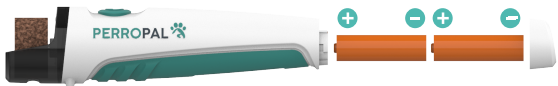
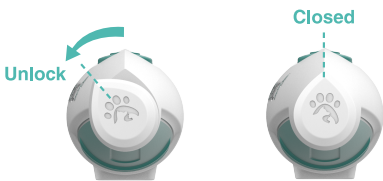
IMPORTANT!

Before Using Your PerroPal Nail Groomer

- First introduce the PerroPal Nail Groomer to your pet turned OFF.
- Acclimate your pet to the Nail Groomer with it ON while giving praise and treats. Use the low speed when starting. Your pet may initially be nervous, but with time, they will get used to the device.
- Be careful not to push or overwhelm your pet during the introduction stage.
- After a few rounds of introduction, your pet should become more relaxed while being groomed.
- Remember – you are in charge. The more assertive you are the more comfortable your pet will become.
- Be patient with your pet. Do not use PerroPal Nail Groomer until your pet is completely comfortable.

Battery Installation:

- Do not mix old and new batteries.
  - Do not mix alkaline, standard, or rechargeable batteries.
1. To remove the battery cover, hold the unit upside down. Twist the battery cover counterclockwise.
  2. Insert 2 AA batteries (not included) following the right polarity (+,-). Refer to the diagram on the right.
  3. When done, place the battery compartment cover back on and twist it clockwise. The bone line/edge of the body should align.



Assembly and Setup:

1. Remove the grinding safety guard from the device.
2. Take one of the sanding drums and slide it over the mandrel. Push it down until it is fully in.
3. Place the grinding safety guard back on, make sure all the edges have snapped into place.

**It is recommended to only use the device with the safety guard on to prevent injury or damage.**

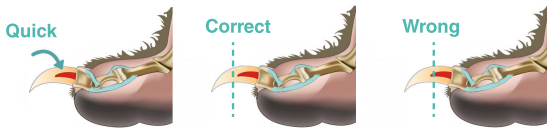


Using your PerroPal Nail Groomer

It is very important to let your pet get used to the nail groomer. Make sure you read the IMPORTANT section of the manual on page 2. Properly introducing the PerroPal Nail Groomer to your pet will ensure a more positive experience for the both of you.

1. Find a comfortable spot. Hold your pet in such a way that you control their movement while maintaining full access to the paw. Check your pet's level of comfort by holding the unit close to the paw for a few seconds before you begin.
2. Always start with a slower speed (Lo) until you and your pet gets fully comfortable with the process. Press the Power Button once to get the low speed and a second time for high speed.
3. Start by gently squeezing the toe pad with your thumb and pointer finger to help extend the nail of your pet. Use caution if your pet has long hair around and on the paws. Keep long hair away from the openings of the safety guard.
4. Apply slight pressure to the nail while moving the nail groomer at an even rate around the edges of each nail to round and smooth out its surface. Spend no more than 2-4 seconds per nail.

5. Alternate between each nail when trimming. Continue to trim the nail until the desired length is achieved. Stop when you get close to the quick. You will see the quick begin to appear when you look at the nail head on.  
NOTE: The quick is the center of the nail where the nerves and blood vessels are located. Avoid cutting into the quick during grooming. It is painful for your pet and may cause bleeding.



6. When finished, turn the device OFF by pressing the power button the third time. When powering off, the mandrel will keep spinning while slowing down to a stop. Praise your pet and give it a treat after the grooming session.  
NOTE: The power button will cycle when pressed: 1-ON Low Speed, 2-ON High Speed, 3-OFF.